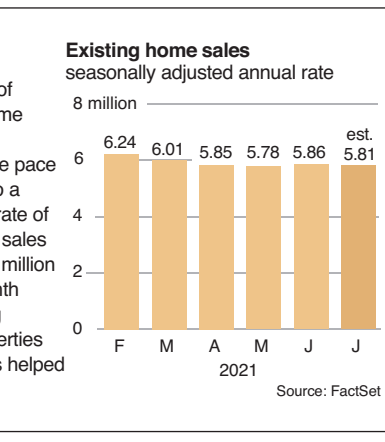


Eye on housing

The National Association of Realtors issues its July tally of previously occupied U.S. home sales Monday.

Economists project that the pace of sales slowed last month to a seasonally adjusted annual rate of 5.81 million homes. In June, sales accelerated to a rate of 5.86 million homes, snapping a four-month stretch of declines, as strong demand for higher-end properties and ultra-low mortgage rates helped push prices to new highs.



Lockdown dividend

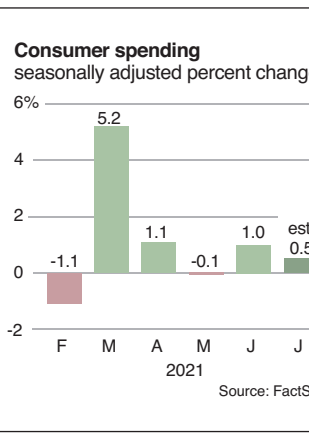
Wall Street expects another solid quarterly report card from Best Buy.

Analysts predict the consumer electronics retailer will report on Tuesday that its earnings and revenue increased from a year earlier. That would echo the company's results in the first quarter. Best Buy has thrived during the pandemic as Americans stepped up spending on laptops and other technology used to get them through working and learning from home.

In a spending mood

The Commerce Department delivers its latest monthly snapshot of consumer spending Friday.

Economists project that American consumers increased their spending by 0.5% in July. That would be down from an increase of 1% in June that was fueled by a pickup in spending on haircuts, airline tickets, restaurant meals and other services. Americans account for 70% of economic activity, so the more they spend, the more the economy grows.



Story Stocks

Technology companies led stocks broadly higher on Wall Street Friday, though the S&P 500 still ended with a 0.6% loss for the week. Technology, consumer discretionary and communications stocks made up a big share of the rally.

Ross Stores

ROST

Close: **\$123.12** ▼ **3.46** or **-2.7%**

The clothing and home accessories chain issued a full-year outlook that was below Wall Street's forecast.

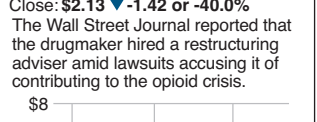


Endo International

ENDP

Close: **\$2.13** ▼ **1.42** or **-40.0%**

The Wall Street Journal reported that the drugmaker hired a restructuring adviser amid lawsuits accusing it of contributing to the opioid crisis.

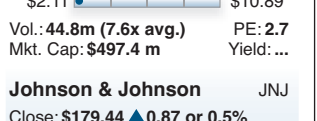


Johnson & Johnson

JNJ

Close: **\$179.44** ▲ **0.87** or **0.5%**

The giant health care company said it will replace CEO Alex Gorsky with another company veteran next year.



Mudrick Capital

MUDS

Close: **\$9.83** ▼ **0.28** or **-2.8%**

The special-purpose acquisition company terminated an agreement to take the trading-card company Topps public.

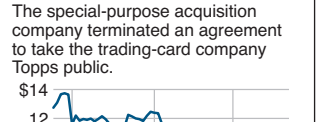


Foot Locker

FL

Close: **\$58.34** ▲ **3.95** or **7.3%**

The mall-based shoe and sportswear chain reported earnings that were more than double what analysts were expecting.

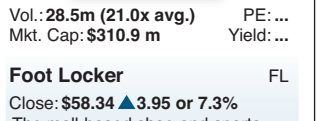


Adobe

ADBE

Close: **\$647.34** ▲ **9.68** or **1.5%**

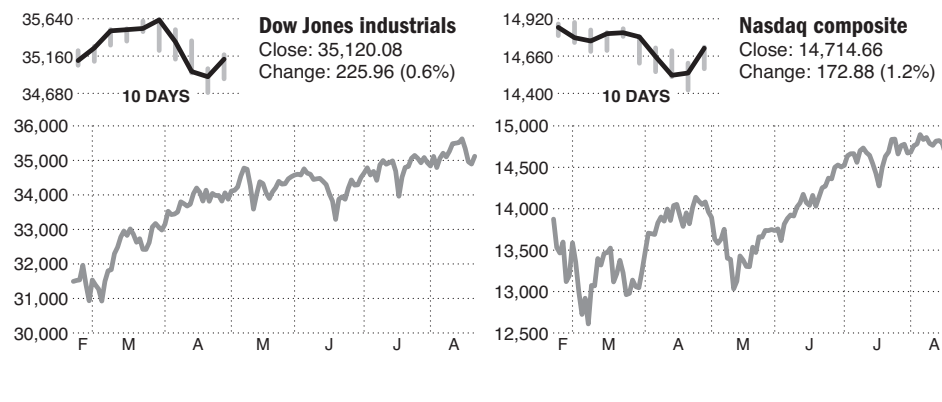
The software company said it would acquire Frame.io, a cloud-based video collaboration company, for \$1.3 billion.



SOURCE: FIS AP

Money & Markets

A click of the wrist gets you more at nashuatelegraph.com



Stocks Recap

	NYSE	NASD	HIGH	LOW	CLOSE	CHG	%CHG	YTD
DOW	3,270	3,388	35,177.26	34,867.07	35,120.08	+225.96	+0.65%	+14.75%
DOW Trans.	4,017	3,792	14,584.38	14,472.61	14,554.71	+34.57	+0.24%	+16.37%
DOW Util.	1,897	2,517	952.13	933.65	950.75	+9.79	+1.04%	+9.96%
NYSE Comp.	1,566	805	16,535.18	16,399.61	16,516.68	+87.54	+0.53%	+13.71%
NASDAQ	71	63	14,722.16	14,571.53	14,714.66	+172.88	+1.19%	+14.17%
S&P 500	39	181	4,444.34	4,406.86	4,441.67	+35.87	+0.81%	+18.25%
S&P 400	566	805	2,677.20	2,642.83	2,675.67	+30.96	+1.17%	+16.00%
Wilshire 5000	71	63	45,929.37	45,498.27	45,908.66	+410.40	+0.90%	+16.35%
Russell 2000	39	181	2,169.65	2,127.32	2,167.60	+35.18	+1.65%	+9.76%

Interest Rates

The yield on the 10-year Treasury note rose to 1.26% Friday. Yields affect rates on mortgages and other consumer loans.

TREASURIES	LAST	PVS	NET CHG	1YR AGO
3-month T-bill	.05	.06	-0.01	.09
6-month T-bill	.05	.0511
52-wk T-bill	.06	.0612
2-year T-note	.23	.22	+0.01	.13
5-year T-note	.80	.78	+0.02	.26
7-year T-note	1.06	1.04	+0.02	.45
10-year T-note	1.26	1.24	+0.02	.64
30-year T-bond	1.87	1.88	-0.01	1.38

CONSUMER RATES	NAT'L AVG	WK AGO	6MO AGO	1YR AGO
48 month new car loan	4.06	4.06	4.12	4.04
Money market account	0.08	0.08	0.08	0.09
1 year CD	0.29	0.29	0.29	0.35
\$30K Home equity loan	4.63	4.63	4.64	4.75
30 year fixed mortgage	3.01	3.05	3.01	3.04
15 year fixed mortgage	2.31	2.33	2.31	2.43

Commodities

Energy prices continued to drop, with U.S. crude oil closing 2.2% lower, wholesale gasoline losing 2.8% and heating oil off 3.1%. Gold and silver prices were mostly flat.

FUELS	CLOSE	PVS	%CHG	%YTD
Crude Oil (bbl)	62.32	63.69	-2.26	+28.4
Ethanol (gal)	2.22	2.22	...	+54.9
Heating Oil (gal)	1.91	1.97	-3.09	+28.7
Natural Gas (mm btu)	3.85	3.83	+0.55	+51.7
Unleaded Gas (gal)	2.02	2.08	-2.78	+42.1

METALS	CLOSE	PVS	%CHG	%YTD
Gold (oz)	1781.00	1780.20	+0.04	-5.9
Silver (oz)	23.11	23.22	-0.50	-12.3
Platinum (oz)	994.20	971.20	+2.37	-7.6
Copper (lb)	4.13	4.04	+2.38	+17.7

AGRICULTURE	CLOSE	PVS	%CHG	%YTD
Cattle (lb)	1.24	1.23	+0.71	+11.0
Coffee (lb)	1.82	1.81	+0.11	+4.5
Corn (bu)	5.39	5.50	-2.05	+11.3
Cotton (lb)	0.93	0.93	+0.37	+19.2
Lumber (1,000 bd ft)	474.30	454.10	+4.43	-45.8
Orange Juice (lb)	1.37	1.33	+2.55	+10.8
Soybeans (bu)	12.94	13.23	-2.21	-1.6
Wheat (bu)	7.14	7.28	-1.82	+11.5

Close and change figures reflect current contract

Foreign Exchange

The U.S. dollar strengthened against the Japanese yen, the Mexican peso and the British pound. The greenback weakened versus the euro and the Swiss franc.

MAJORS	LAST	CHG	%CHG	1YR AGO
USD per British Pound	1.3622	-0.018	-1.3%	1.3211
Canadian Dollar	1.2845	+0.025	+1.9%	1.3180
USD per Euro	1.1696	+0.019	+1.6%	1.1852
Japanese Yen	109.82	+0.3	+0.3%	105.76
Mexican Peso	20.3803	+1.791	+8.8%	22.1405

EUROPE/AFRICA/MIDDLE EAST	LAST	CHG	%CHG	1YR AGO
Israeli Shekel	3.2387	-0.100	-3.1%	3.4016
Norwegian Krone	9.0283	-0.100	-1.1%	8.9445
South African Rand	15.3543	+1.011	+6.6%	17.3193
Swedish Krona	8.8055	-0.045	-0.5%	8.7171
Swiss Franc	0.9176	-0.010	-1.1%	0.9086

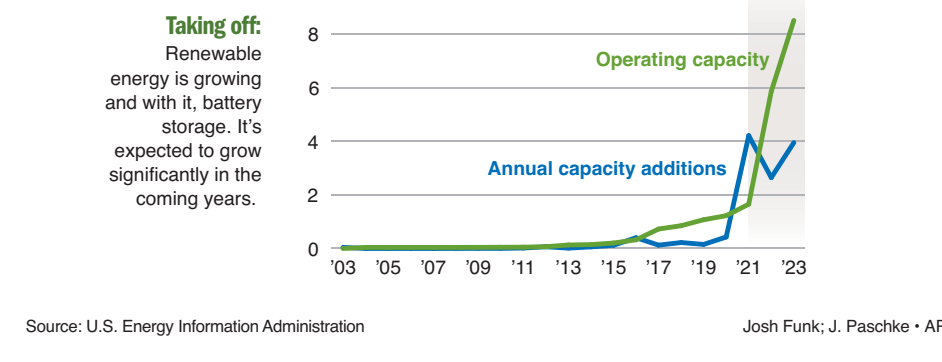
ASIA/PACIFIC	LAST	CHG	%CHG	1YR AGO
Australian Dollar	1.4012	+0.026	+1.9%	1.3905
Chinese Yuan	6.5015	+0.066	+1.0%	6.9159
Hong Kong Dollar	7.7902	+0.012	+0.2%	7.7501
Indian Rupee	74.300	-1.21	-1.6%	75.016
Singapore Dollar	1.3617	-0.030	-2.2%	1.3674
South Korean Won	1176.47	-69	-0.6%	1186.32
Taiwan Dollar	28.00	-0.5	-1.8%	29.41

Battery boost

Solar energy plants will drive a projected six-fold increase in electric utilities' battery storage capacity in the coming years, according to the U.S. Energy Information Administration.

Last year utilities' battery storage grew 35% to 1,650 megawatts. They plan to add at least another 10,000 megawatts by 2023. Shares in AES Corporation, which makes the powerful batteries, have nearly doubled over the past five years, while Florida-based utility NextEra Energy, which has invested in large battery storage systems, has seen its stock soar 175%.

"Growth in U.S. battery systems is critical as the



United States faces new hurdles to reliable electricity delivery," said Steve Nalley, acting head of the U.S. Energy Information Administration.

Batteries can be used to store electricity generated by solar, wind and other sources of renewable energy until it is needed, and much of the growth in battery power is expected to come from solar power plants.

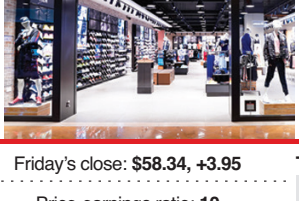
Five states — California, Texas, Illinois, Massachusetts and Hawaii — accounted for more than 70% of the total U.S. battery storage capacity at the end of last year with California alone housing 31% of all the batteries.

Company Spotlight Locked in

Foot Locker had its best day in more than five months after the shoe and sportswear retailer posted strong second-quarter results as shoppers returned to its mall-based stores.

On a per-share basis, New York-based Foot Locker earned \$2.21 in the period, more than tripling the 71 cents in the year-ago period and the 66 cents from the pre-pandemic second quarter of 2019. Analysts were expecting profits of \$1.01 in the period. The company said demand for women's and children's footwear helped boost sales to \$2.28 billion in the quarter, an increase of 9.5% from last year.

"Our strong performance this quarter reflects the health of our category, the deep engagement we have with our customers, and the strategic nature of our relationships with our vendor partners," said CEO Richard Johnson.



Foot Locker (FL)	Friday's close: \$58.34, +3.95	Total return	1-yr	3-yrs*	5-yrs*
52-WEEK RANGE	\$27 - \$68	FL	117.6%	9.3	-0.7
Price-earnings ratio: 10	(Based on past 12-month results)	Div. yield: 2.1%		Dividend: \$1.20	

*annualized Source: FactSet

25 Biggest Funds

FUND	NAV	CHG 4-WK	12-MO	3-YR	5YR	
American Funds AmrcnBalA m	33.12	+13	+1.6	+18.8/D	+11.4/C	+10.8/B
CptlncBldrA m	68.60	+23	+1.3	+19.2/C	+8.1/C	+6.9/C
FdmtilnvsA m	77.31	+51	+2.4	+30.6/D	+14.9/D	+15.2/D
GrfAmrcA m	75.82	+67	+2.1	+30.8/C	+20.2/D	+19.9/D
IncAmrcA m	25.96	+09	+1.5	+20.4/E	+9.4/E	+8.7/E
InvCAmrcA m	51.10	+43	+2.8	+29.3/E	+14.1/D	+13.8/E
WAMtilnvsA m	57.11	+36	+2.9	+31.5/D	+13.8/E	+14.2/D
Dodge & Cox Inc	14.42	...	-1	+2.1/C	+6.3/B	+4.4/A
Stk	240.52	+170	+3.1	+51.8/A	+14.0/A	+15.8/A
Fidelity 500IdxInslPrm	154.40	+125	+2.9	+33.2/C	+18.0/A	+17.4/A
Contrafund	19.45	+19	+3.1	+28.6/D	+20.9/D	+21.4/C
TiMktIdxInslPrm	126.92	+115	+2.3	+34.7/B	+17.6/B	+17.3/A
PIMCO Inclnstl	12.01	...	0.0	+7.1/	+5.4/	+5.4/
Vanguard 500IdxAdmlr	410.76	+333	+2.9	+33.2/C	+17.9/B	+17.4/A
InTTEAdmlr	14.85	...	-3	+2.8/D	+4.9/B	+3.1/B
InslIdxInsl	388.73	+316	+2.9	+33.2/C	+18.0/A	+17.4/A
InslIdxInslPlus	388.75	+316	+2.9	+33.2/C	+18.0/A	+17.5/A
PmCpAdmlr	179.89	+83	+1.3	+35.9/B	+15.5/C	+18.2/A
TiBMIdxAdmlr	11.40	...	-1	-0.3/D	+5.5/C	+3.1/C
TiInSlIdxAdmlr	34.33	+06	-2	+23.7/D	+9.0/C	+9.2/C
TiSMIdxAdmlr	20.52	+04	-2	+23.6/D	+8.9/C	+9.1/C
TiSMIdxAdmlr	111.02	+100	+2.3	+34.7/B	+17.7/B	+17.4/A
TiSMIdxInsl	111.04	+100	+2.3	+34.7/B	+17.7/B	+17.4/A
TiSMIdxInsl	110.97	+99	+2.3	+34.6/B	+17.6/B	+17.2/B
WingtnAdmlr	86.14	+43	+2.4	+22.7/B	+13.2/A	+12.0/A

Stocks of Local Interest

NAME	TICKER	52-WK RANGE	LO	HI	CLOSE	CHG	%CHG	WK	MO	QTR	YTD %CHG	1YR %RTN	P/E	DIV
AMC Entertainment A	AMC	1.91	...	71.62	34.41	+59	+1.7	▲	▼	▼	+1523.1	+583.2
AT&T Inc	T	26.35	...	33.88	27.57	+0.4	+0.1	▼	▼	▼	-4.1	+0.4	2.08	...
Adv Micro Dev	AMD	72.50	...	122.49	104.65	+95	+0.9	▼	▲	▲	+14.1	+26.7	37	...
American Airlines Gp	AAL	10.63	...	26.09	18.50	-23	-1.2	▼	▼	▼	+17.3	+51.9	0.40	...
Anheuser-Busch InBev	BUD	51.45	...	79.67	59.96	+09	+0.2	▼	▼	▼	-14.2	+7.3	21	1.10e
Apple Inc	AAPL	103.10	...	151.68	148.19	+149	+1.0	▼	▼	▼	+11.7	+27.4	40	0.88
Bank of America	BAC	22.95	...	43.49	40.37	+18	+0.4	▼	▼	▼	+33.2	+62.6	17	0.84f
Benchmark Elec	BHE	18.75	...	32.56	25.74	+58	+2.3	▼	▲	▲	-4.7	+27.7	33	0.66f
Berkshire Hath A	BRK/A	297.817	...	445,000	430,007	+1,013	+0.2	▼	▲	▲	+23.6	+37.4	35	...
Bit Digital Inc	BTBT	3.40	...	33.00	11.96	-12	-1.0	▼	▼	▼	-45.4	+198.9
Bottomline Tech Inc	EPAY	36.05	...	55.09	41.60	+48	+1.2	▲	▲	▲	-2.1	-19.5	67	...
Brist Myr Sqb	BMY	56.75	...	69.34	69.20	+69	+1.0	▲	▲	▲	+11.6	+10.8	1.96f	...
Carnival Corp	CCL	12.11	...	31.52	21.96	+30	+1.4	▼	▼	▼	+1.4	+56.0
C														